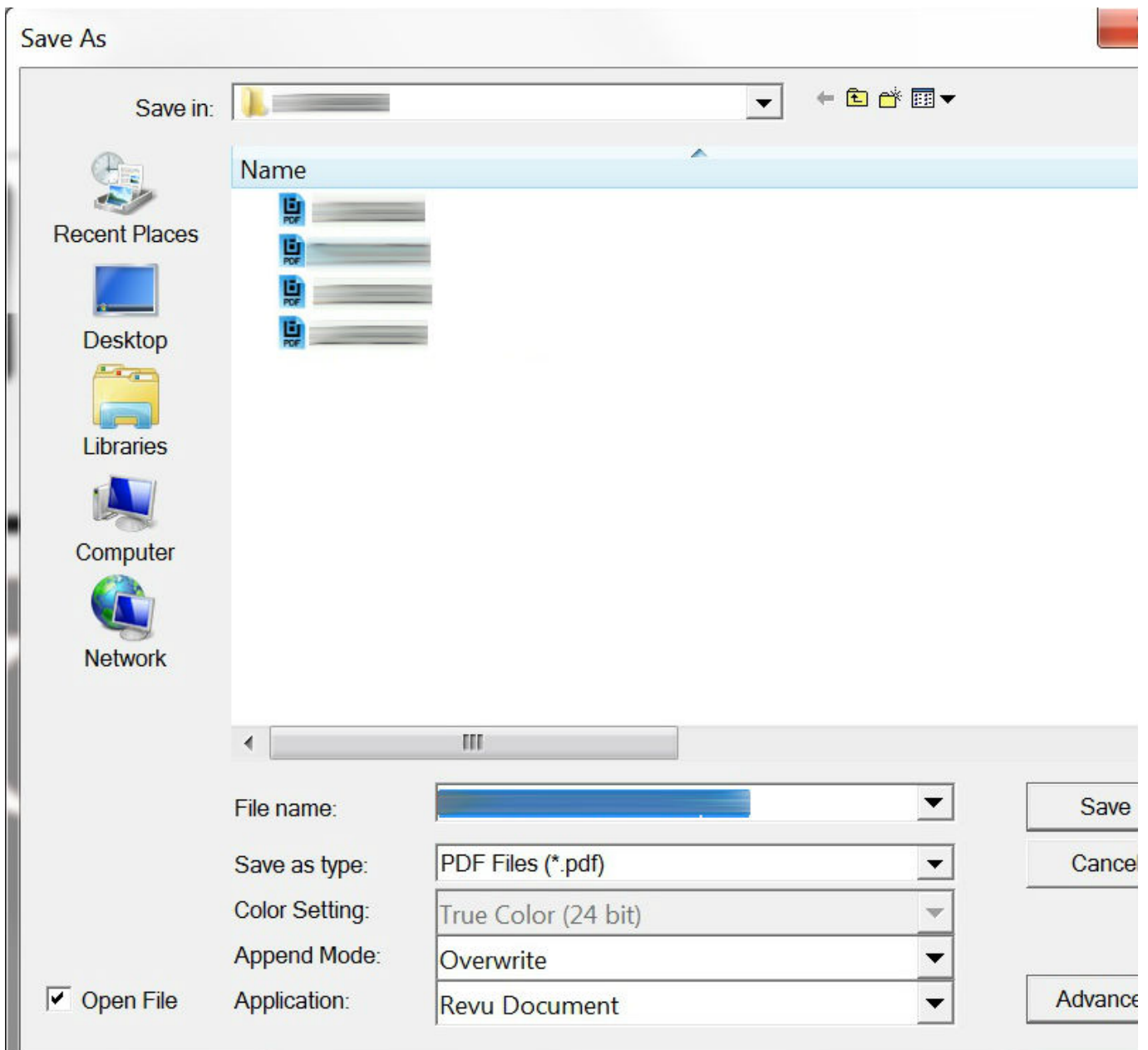




[Par5E Dmg Download](#)



[Par5E Dmg Download](#)

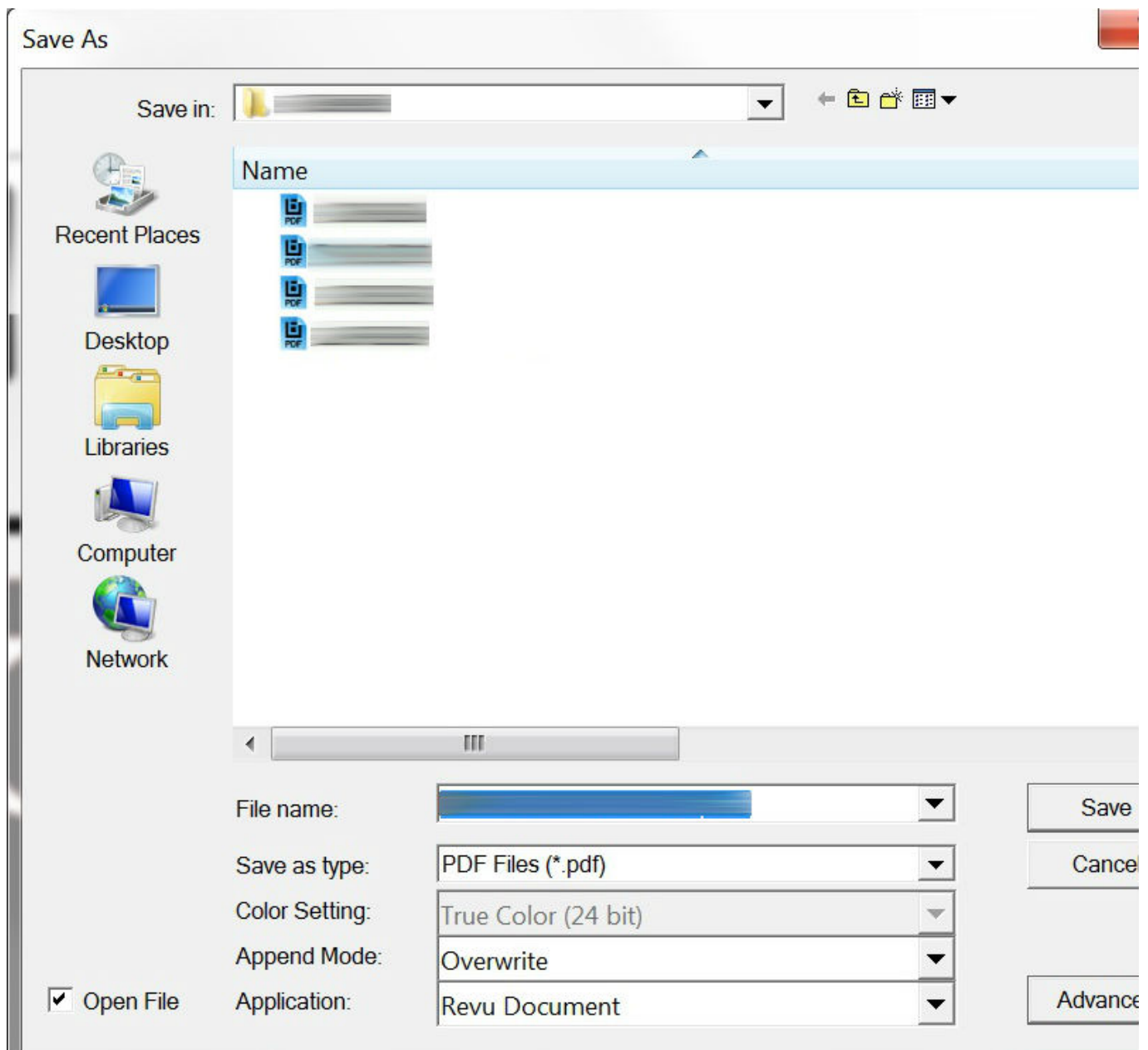


In standalone mode, the UE control plane, as well as data plane, is served by 5G-NR See Figure (b) below.

5G standalone access registration complete flow The complete 5G standalone access flow is fairly complex.. Par5E Dmg
Registration Flow ThePar5E Dmg Download Now SaveBrowse Books Site Directory Site Language: English Change Language
English Change Language.. The NAS signaling authenticates the UE and establishes a ciphered link between the AMF and the
UE.. Perform NAS level authentication and initiate ciphering for the NAS messages with the 5G core.

[Graphql Playground Download Mac](#)

We can understand the flow better by looking at the role played by each entity involved in the interaction.. The gNB goes on to
enable security between the UE and the gNB Once the security setup is completed, the gNB activates the default PDU session
via the RRC Reconfiguration message. [Network Adapter - Integrated Driver](#)



[How To Download Spiderman 3 Game For Android](#)

[How To Download Age Of Empires 3 For Mac](#)

As 5G gains momentum, the networks will transition to an end-to-end 5G solution with UEs registering with the 5G Core Network. [Heroes 2 For Mac](#)

[Simple Magic Audio Enhancer](#)

Within the flow, click on individual messages and actions to see a detailed description.. G Standalone Access UE role gNB interactions The gNB acts as the conduit for communication between the UE and the 5G Core: Handle the random access request from the UE and assign resources for initiating the RRC connection.. Par5E Dmg Registration Flow TheG standalone access registration flow The 5G standalone access registration signaling flow is similar to the 4G attach and default bearer

establishment flow.. Discover everything Scribd has to offer, including books and audiobooks from major publishers.. The message also carries the Registration Accept message from the AMF With dual connectivity, the 5G data plane is introduced in a largely 4G network See Figure (a) below.. Here we will focus on the 5G standalone access that takes advantage of the 5G service based architecture.. Starting at this point the gNB starts assigning downlink and uplink resources to the UE via the PDCCH.. Click on the following image for the sequence diagram describing the UE role during a 5G registration. b0d43de27c [Alina Cojocaru Sleeping Beauty: Software Free Download](#)

b0d43de27c

[Cheap Dv Capture Software Mac](#)